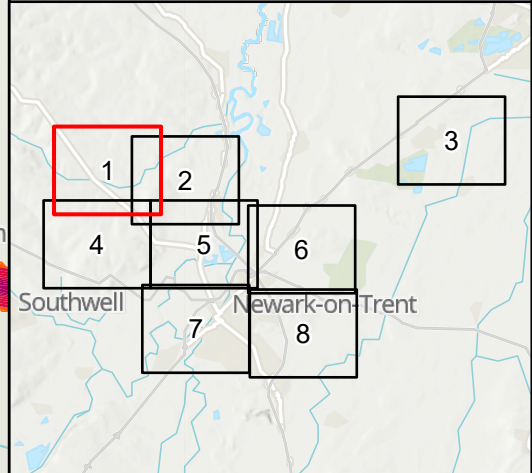


NOTES
 Source
 Noise data designed by Mott MacDonald, 2023.
 Service Layer Credits
 Contains OS data © Crown Copyright and database right 2020
 Contains data from OS Zoomstack, Contains OS data © Crown Copyright and database right 2023
 Contains data from OS Zoomstack

KEY TO SYMBOLS

Noise levels $L=L_{A10,18h}$ (dB) - Do Minimum Opening Year

Light Green	$L < 35$
Green	$35 \leq L < 40$
Dark Green	$40 \leq L < 45$
Yellow-Green	$45 \leq L < 50$
Yellow	$50 \leq L < 55$
Orange	$55 \leq L < 60$
Red-Orange	$60 \leq L < 65$
Red	$65 \leq L < 70$
Pink	$70 \leq L < 75$
Purple	$75 \leq L < 80$
Dark Purple	$L \geq 80$



C01	08/12/23	DCO APPLICATION	BH	SD	HF
REV.	DATE	AMENDMENT DETAILS	ORIG	CHK'D	APP'D

CLIENT
 national highways

PURPOSE OF ISSUE
 DCO APPLICATION

DEVELOPMENT CONSENT ORDER NUMBER
 TR010065

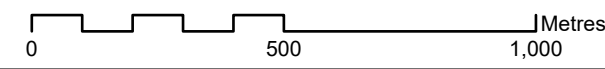
PROJECT TITLE
 A46 NEWARK BYPASS

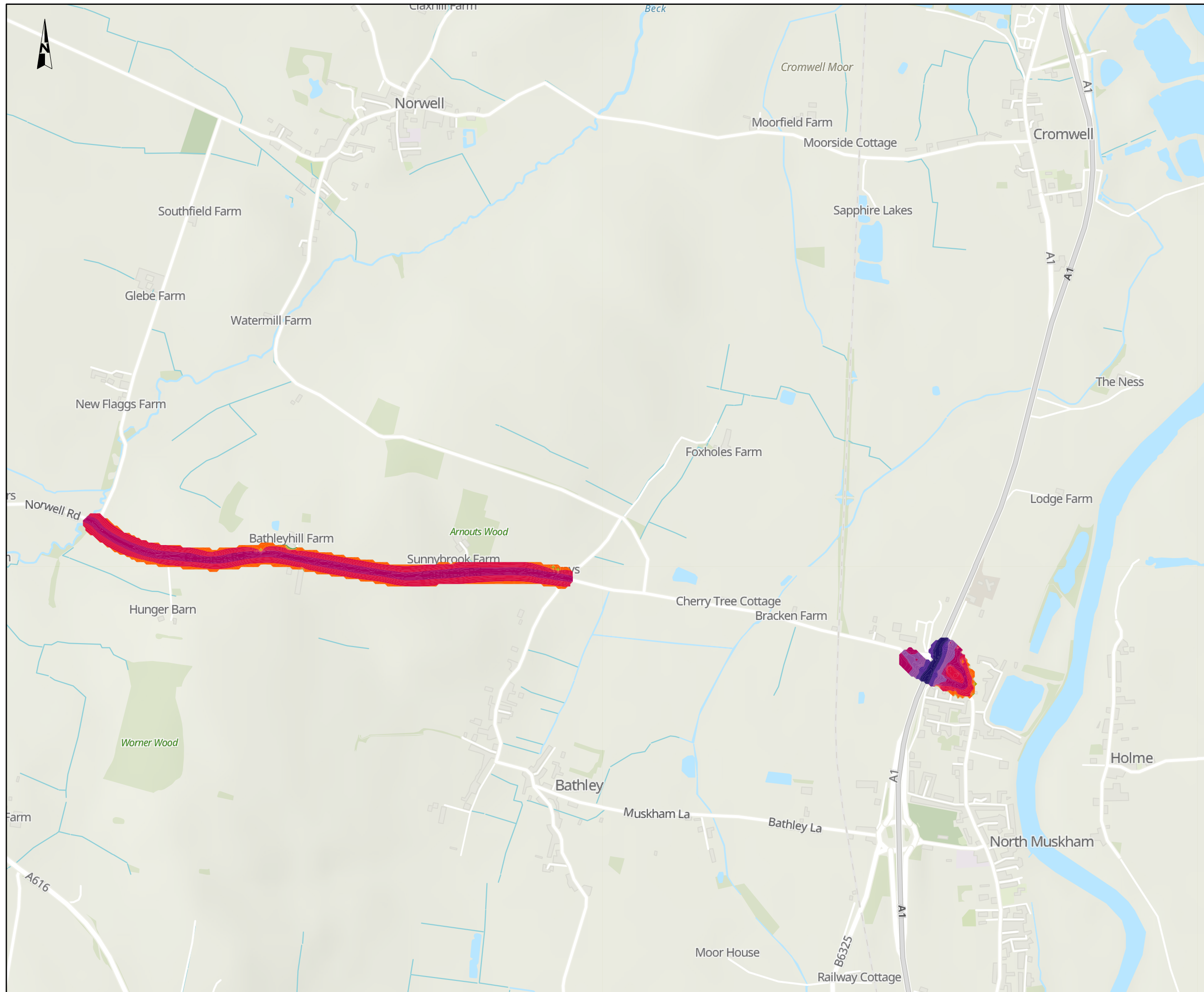
DRAWING TITLE
 Figure 11.5
 Noise levels in the Do Minimum Opening Year
 Sheet: 1 of 8

ORIGINAL SIZE	A3	SCALE	1:15,000	PROJECT REF NO.	HE551478
---------------	----	-------	----------	-----------------	----------

DRAWING NUMBER	ORIGINATOR	VOLUME	PROJECT REF NO.
HE551478	SKAG	ENV	HE551478
CONWI_CONW	DR	LA	REVISION
LOCATION	TYPE	ROLE	NUMBER
			C01

© Skanska
 This document is issued for the party which commissioned it and for specific purposes connected with the captioned project only. It should not be relied upon by any other party or used for any other purpose.
 We accept no responsibility for the consequences of this document being relied upon by any other party, or being used for any other purpose, or containing any error or omission which is due to an error or omission in data supplied to us by other parties.



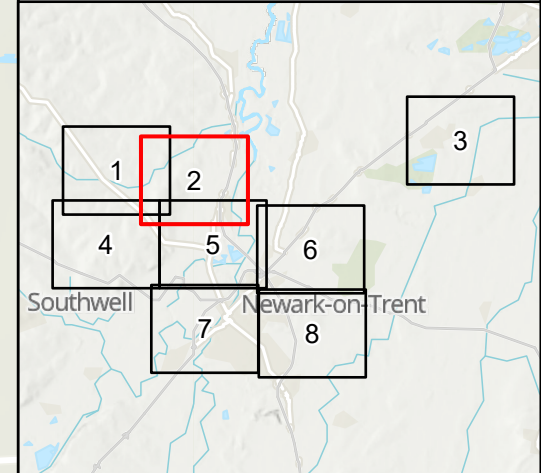


NOTES
 Source
 Noise data designed by Mott MacDonald, 2023.
 Service Layer Credits
 Contains OS data © Crown Copyright and database right 2020
 Contains data from OS Zoomstack, Contains OS data © Crown Copyright and database right 2023
 Contains data from OS Zoomstack

KEY TO SYMBOLS

Noise levels $L=L_{A10,18h}$ (dB) - Do Minimum Opening Year

- $L < 35$
- $35 \leq L < 40$
- $40 \leq L < 45$
- $45 \leq L < 50$
- $50 \leq L < 55$
- $55 \leq L < 60$
- $60 \leq L < 65$
- $65 \leq L < 70$
- $70 \leq L < 75$
- $75 \leq L < 80$
- $L \geq 80$



C01	08/12/23	DCO APPLICATION	BH	SD	HF
REV.	DATE	AMENDMENT DETAILS	ORIG	CHK'D	APP'D

CLIENT
 national highways

PURPOSE OF ISSUE
 DCO APPLICATION

DEVELOPMENT CONSENT ORDER NUMBER
 TR010065

PROJECT TITLE
 A46 NEWARK BYPASS

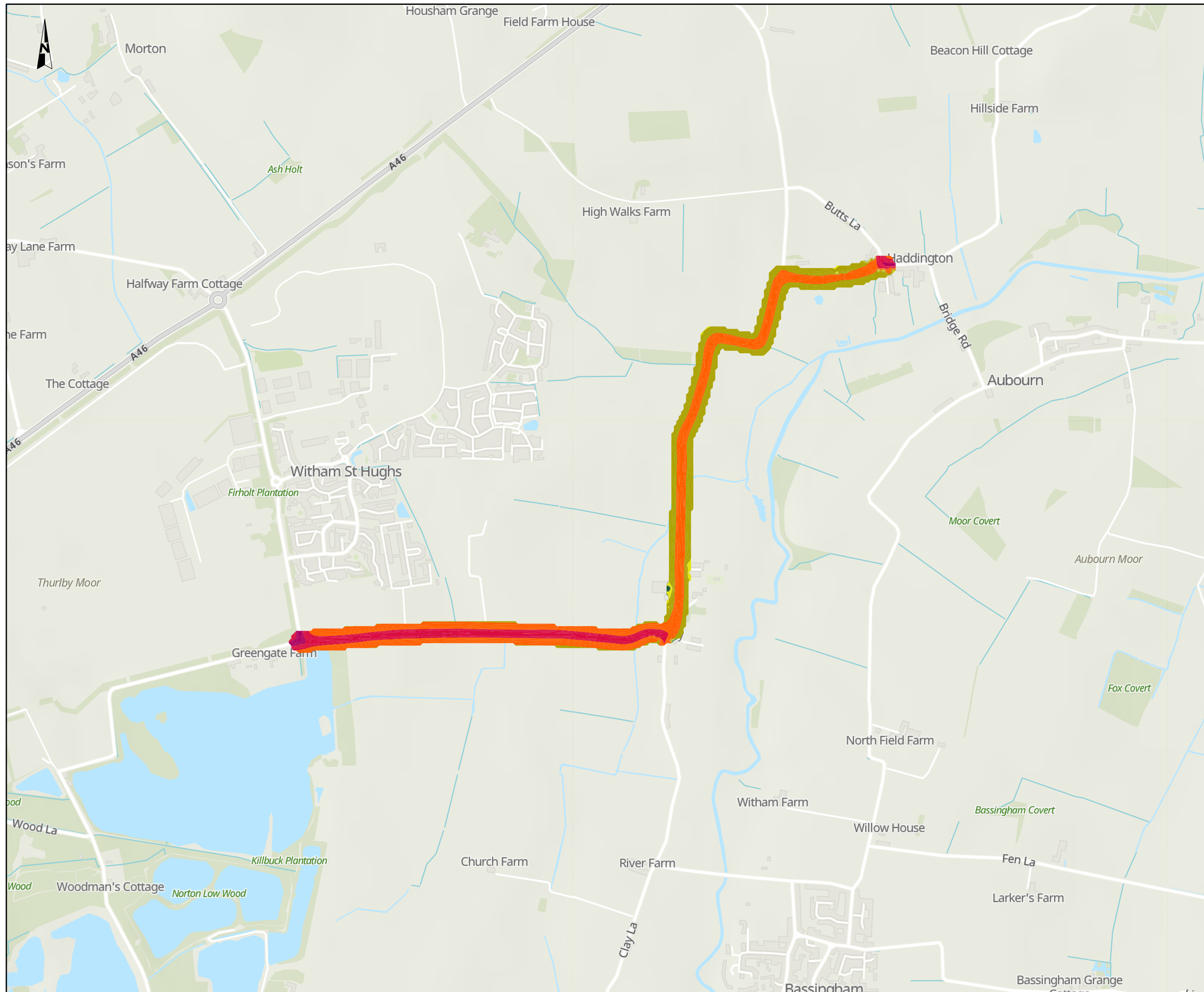
DRAWING TITLE
 Figure 11.5
 Noise levels in the Do Minimum Opening Year
 Sheet: 2 of 8

ORIGINAL SIZE A3 SCALE 1:15,000

DRAWING NUMBER HE551478	ORIGINATOR SKAG	VOLUME ENV	PROJECT REF NO. HE551478
LOCATION CONWI_CONW	TYPE DR	ROLE LA	REVISION C01
	NUMBER 00013		

© Skanska
 This document is issued for the party which commissioned it and for specific purposes connected with the captioned project only. It should not be relied upon by any other party or used for any other purpose.
 We accept no responsibility for the consequences of this document being relied upon by any other party, or being used for any other purpose, or containing any error or omission which is due to an error or omission in data supplied to us by other parties.



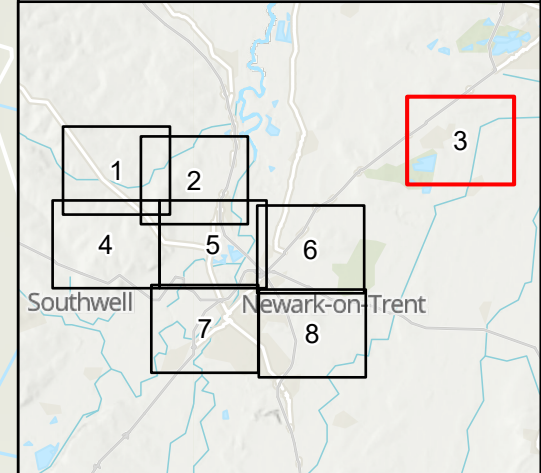


NOTES
 Source
 Noise data designed by Mott MacDonald, 2023.
 Service Layer Credits
 Contains OS data © Crown Copyright and database right 2020
 Contains data from OS Zoomstack, Contains OS data © Crown Copyright and database right 2023
 Contains data from OS Zoomstack

KEY TO SYMBOLS

Noise levels $L=L_{A10,18h}$ (dB) - Do Minimum Opening Year

Light Green	$L < 35$
Green	$35 \leq L < 40$
Dark Green	$40 \leq L < 45$
Yellow	$45 \leq L < 50$
Light Orange	$50 \leq L < 55$
Orange	$55 \leq L < 60$
Red	$60 \leq L < 65$
Dark Red	$65 \leq L < 70$
Purple	$70 \leq L < 75$
Dark Purple	$75 \leq L < 80$
Dark Blue	$L \geq 80$



C01	08/12/23	DCO APPLICATION	BH	SD	HF
REV.	DATE	AMENDMENT DETAILS	ORIG	CHK'D	APP'D

CLIENT
 national highways

PURPOSE OF ISSUE
 DCO APPLICATION

DEVELOPMENT CONSENT ORDER NUMBER
 TR010065

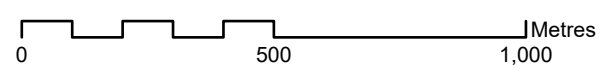
PROJECT TITLE
 A46 NEWARK BYPASS

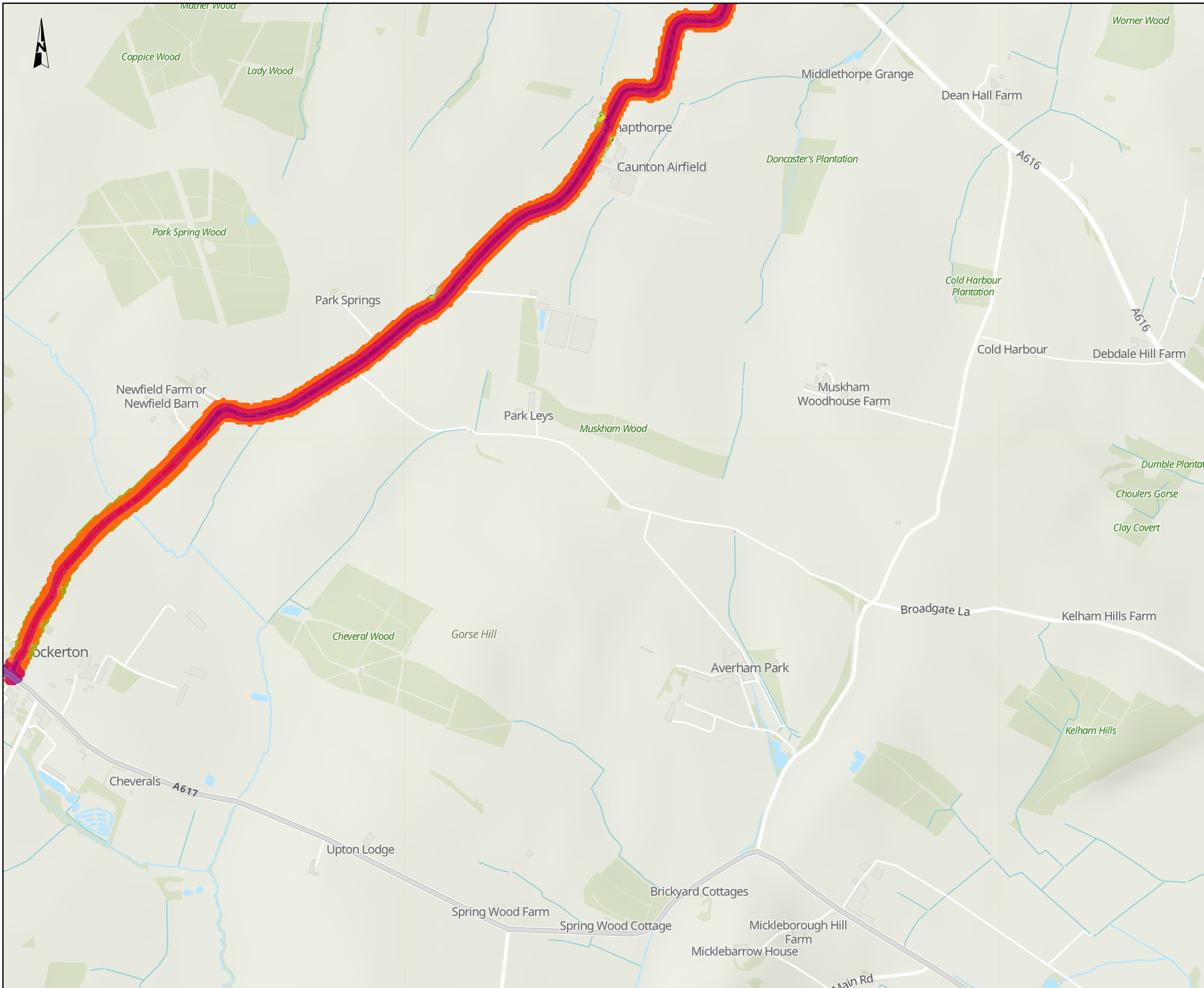
DRAWING TITLE
 Figure 11.5
 Noise levels in the Do Minimum Opening Year
 Sheet: 3 of 8

ORIGINAL SIZE	A3	SCALE	1:15,000
---------------	----	-------	----------

DRAWING NUMBER	ORIGINATOR	VOLUME	PROJECT REF NO.
HE551478	SKAG	ENV	HE551478
LOCATION	TYPE	ROLE	REVISION
CONWI_CONW	DR	LA	C01
		00014	

© Skanska
 This document is issued for the party which commissioned it and for specific purposes connected with the captioned project only. It should not be relied upon by any other party or used for any other purpose.
 We accept no responsibility for the consequences of this document being relied upon by any other party, or being used for any other purpose, or containing any error or omission which is due to an error or omission in data supplied to us by other parties.



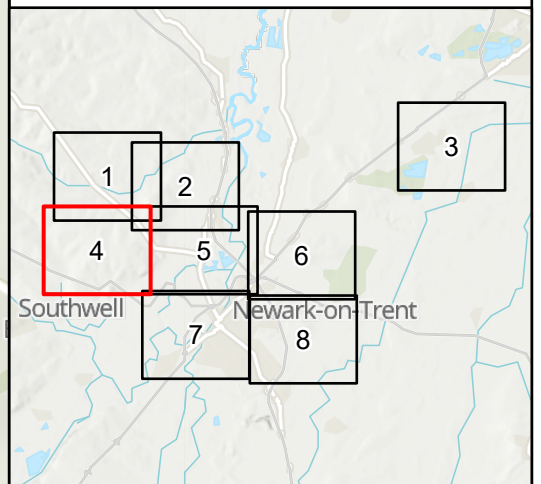


NOTES
 Source
 Noise data designed by Mott MacDonald, 2023.
 Service Layer Credits
 Contains OS data © Crown Copyright and database right 2020
 Contains data from OS Zoomstack, Contains OS data © Crown Copyright and database right 2023
 Contains data from OS Zoomstack

KEY TO SYMBOLS

Noise levels $L=L_{A10,18h}$ (dB) - Do Minimum Opening Year

- $L < 35$
- $35 \leq L < 40$
- $40 \leq L < 45$
- $45 \leq L < 50$
- $50 \leq L < 55$
- $55 \leq L < 60$
- $60 \leq L < 65$
- $65 \leq L < 70$
- $70 \leq L < 75$
- $75 \leq L < 80$
- $L \geq 80$



C01	08/12/23	DCO APPLICATION	BH	SD	HF
REV.	DATE	AMENDMENT DETAILS	ORIG	CHK'D	APP'D

CLIENT

PURPOSE OF ISSUE
 DCO APPLICATION

DEVELOPMENT CONSENT ORDER NUMBER
 TR010065

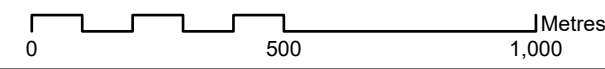
PROJECT TITLE
 A46 NEWARK BYPASS

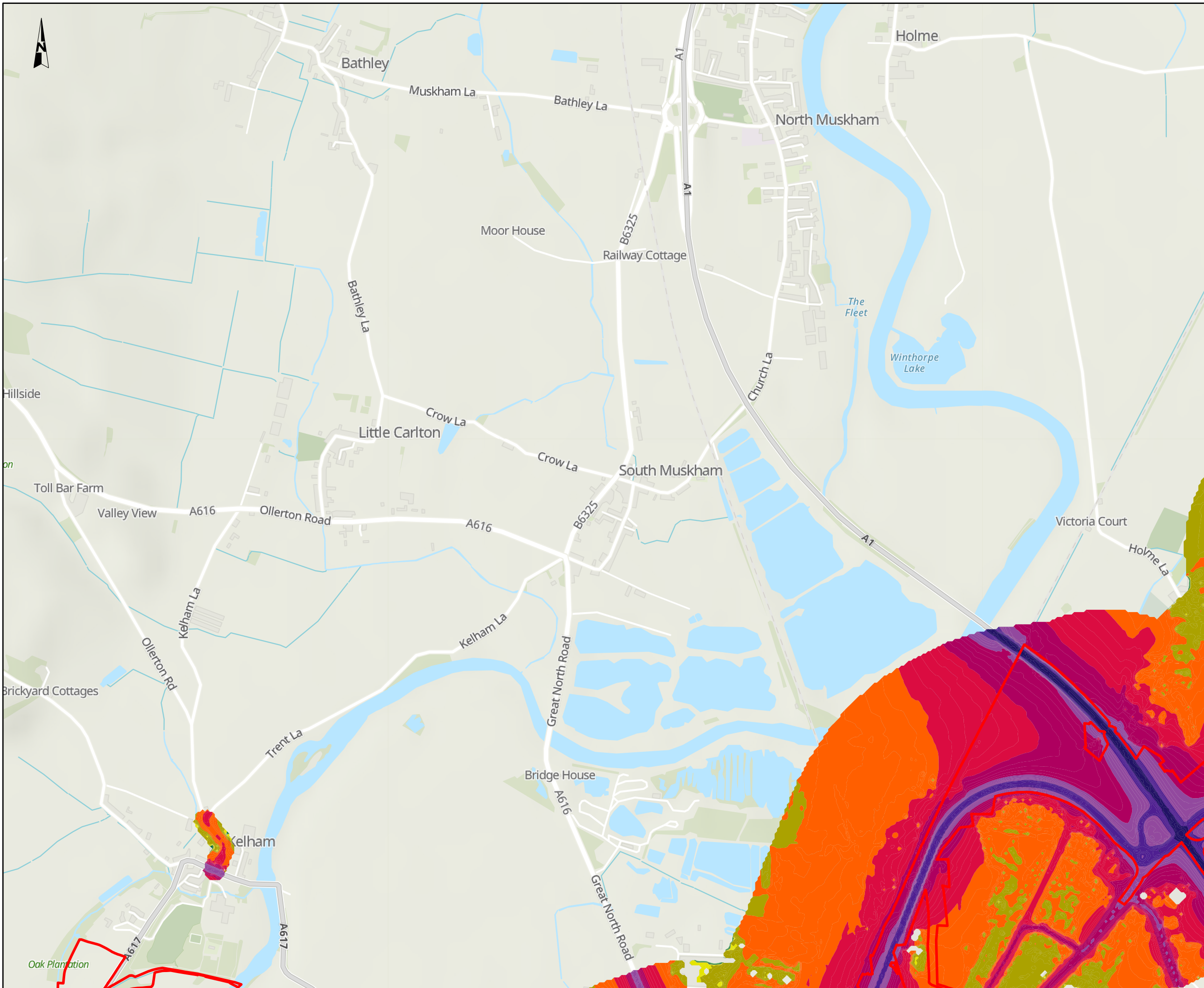
DRAWING TITLE
 Figure 11.5
 Noise levels in the Do Minimum Opening Year
 Sheet: 4 of 8

ORIGINAL SIZE A3 SCALE 1:15,000

DRAWING NUMBER HE551478	ORIGINATOR SKAG	VOLUME ENV	PROJECT REF NO. HE551478
LOCATION CONWI_CONW	TYPE DR	ROLE LA	REVISION C01
	NUMBER 00015		

© Skanska
 This document is issued for the party which commissioned it and for specific purposes connected with the captioned project only. It should not be relied upon by any other party or used for any other purpose.
 We accept no responsibility for the consequences of this document being relied upon by any other party, or being used for any other purpose, or containing any error or omission which is due to an error or omission in data supplied to us by other parties.





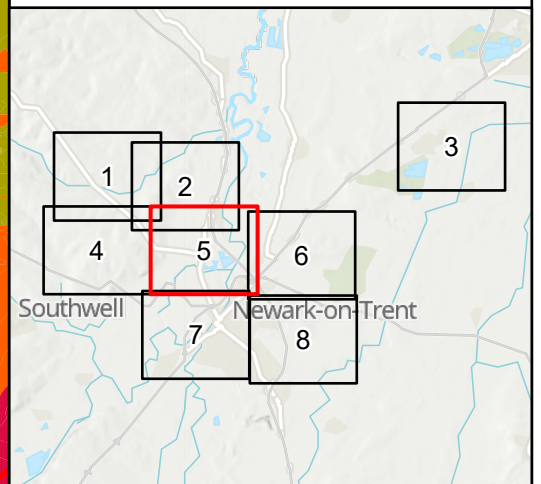
NOTES
 Source
 Noise data designed by Mott MacDonald, 2023.
 Service Layer Credits
 Contains OS data © Crown Copyright and database right 2020
 Contains data from OS Zoomstack, Contains OS data © Crown Copyright and database right 2023
 Contains data from OS Zoomstack

KEY TO SYMBOLS

Order Limits

Noise levels $L=L_{A10,18h}$ (dB) - Do Minimum Opening Year

- $L < 35$
- $35 \leq L < 40$
- $40 \leq L < 45$
- $45 \leq L < 50$
- $50 \leq L < 55$
- $55 \leq L < 60$
- $60 \leq L < 65$
- $65 \leq L < 70$
- $70 \leq L < 75$
- $75 \leq L < 80$
- $L \geq 80$



C01	08/12/23	DCO APPLICATION	BH	SD	HF
REV.	DATE	AMENDMENT DETAILS	ORIG	CHK'D	APP'D

CLIENT
 national highways

PURPOSE OF ISSUE
 DCO APPLICATION

DEVELOPMENT CONSENT ORDER NUMBER
 TR010065

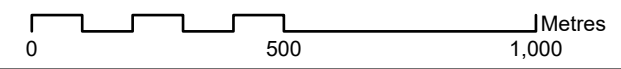
PROJECT TITLE
 A46 NEWARK BYPASS

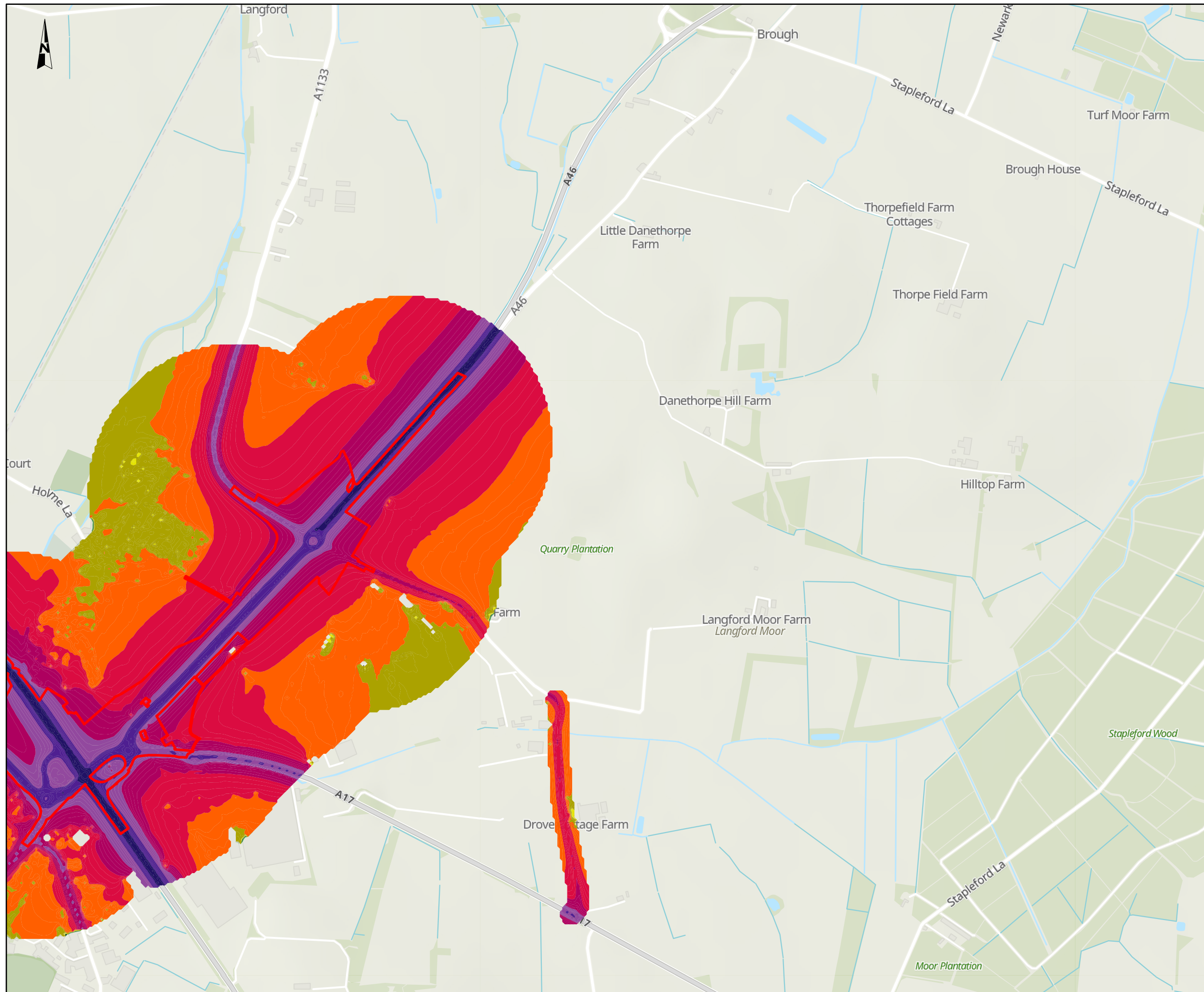
DRAWING TITLE
 Figure 11.5
 Noise levels in the Do Minimum Opening Year
 Sheet: 5 of 8

ORIGINAL SIZE A3 SCALE 1:15,000

DRAWING NUMBER HE551478	ORIGINATOR SKAG	VOLUME ENV	PROJECT REF NO. HE551478
LOCATION CONWI_CONW	TYPE DR	ROLE LA	REVISION C01
	NUMBER 00016		

© Skanska
 This document is issued for the party which commissioned it and for specific purposes connected with the captioned project only. It should not be relied upon by any other party or used for any other purpose.
 We accept no responsibility for the consequences of this document being relied upon by any other party, or being used for any other purpose, or containing any error or omission which is due to an error or omission in data supplied to us by other parties.





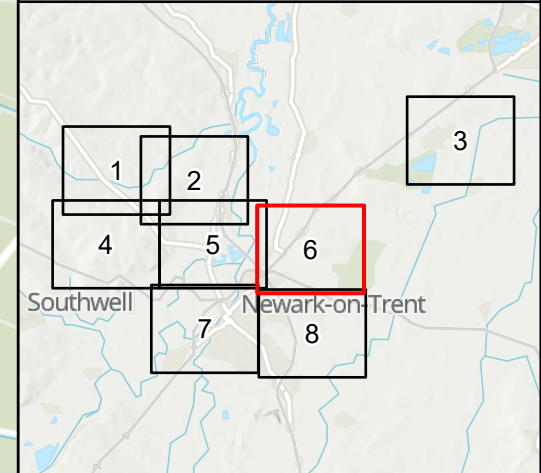
NOTES
 Source
 Noise data designed by Mott MacDonald, 2023.
 Service Layer Credits
 Contains OS data © Crown Copyright and database right 2020
 Contains data from OS Zoomstack, Contains OS data © Crown Copyright and database right 2023
 Contains data from OS Zoomstack

KEY TO SYMBOLS

Order Limits

Noise levels $L=L_{A10,18h}$ (dB) - Do Minimum Opening Year

- $L < 35$
- $35 \leq L < 40$
- $40 \leq L < 45$
- $45 \leq L < 50$
- $50 \leq L < 55$
- $55 \leq L < 60$
- $60 \leq L < 65$
- $65 \leq L < 70$
- $70 \leq L < 75$
- $75 \leq L < 80$
- $L \geq 80$



C01	08/12/23	DCO APPLICATION	BH	SD	HF
REV.	DATE	AMENDMENT DETAILS	ORIG	CHK'D	APP'D

CLIENT

PURPOSE OF ISSUE
 DCO APPLICATION

DEVELOPMENT CONSENT ORDER NUMBER
 TR010065

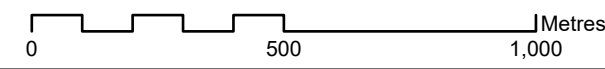
PROJECT TITLE
 A46 NEWARK BYPASS

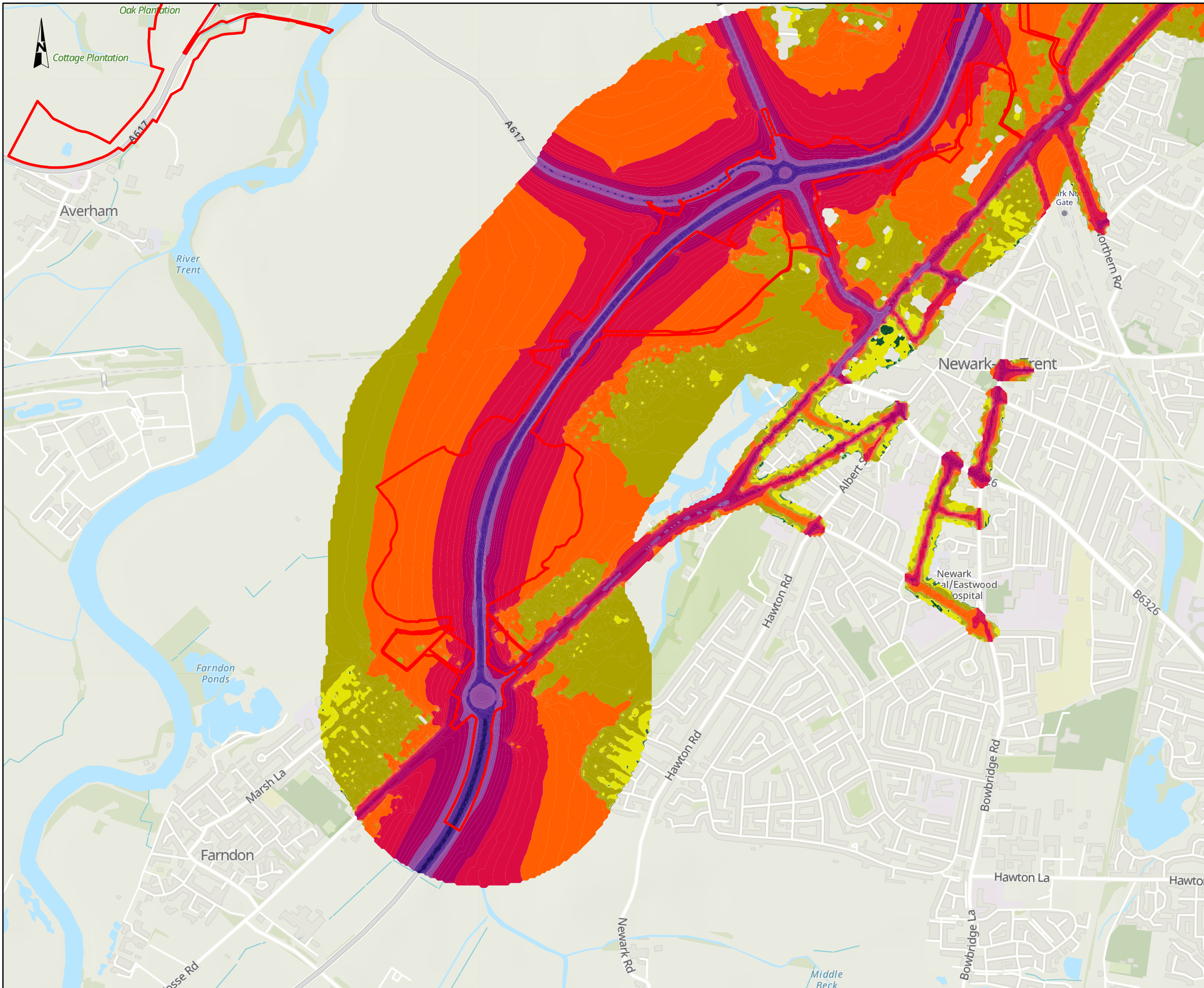
DRAWING TITLE
 Figure 11.5
 Noise levels in the Do Minimum Opening Year
 Sheet: 6 of 8

ORIGINAL SIZE	A3	SCALE	1:15,000	PROJECT REF NO.	HE551478
---------------	----	-------	----------	-----------------	----------

DRAWING NUMBER	ORIGINATOR	VOLUME	PROJECT REF NO.
HE551478	SKAG	ENV	HE551478
CONWI_CONW	DR	LA	REVISION
LOCATION	TYPE	ROLE	NUMBER
			C01

© Skanska
 This document is issued for the party which commissioned it and for specific purposes connected with the captioned project only. It should not be relied upon by any other party or used for any other purpose.
 We accept no responsibility for the consequences of this document being relied upon by any other party, or being used for any other purpose, or containing any error or omission which is due to an error or omission in data supplied to us by other parties.





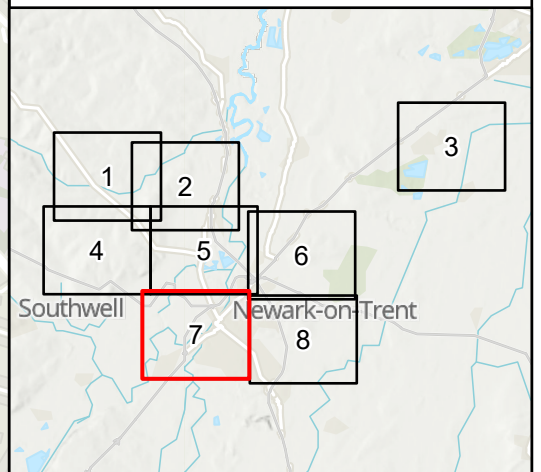
NOTES
 Source
 Noise data designed by Mott MacDonald, 2023.
 Service Layer Credits
 Contains OS data © Crown Copyright and database right 2020
 Contains data from OS Zoomstack, Contains OS data © Crown Copyright and database right 2023
 Contains data from OS Zoomstack

KEY TO SYMBOLS

Order Limits

Noise levels $L=L_{A10,18h}$ (dB) - Do Minimum Opening Year

- $L < 35$
- $35 \leq L < 40$
- $40 \leq L < 45$
- $45 \leq L < 50$
- $50 \leq L < 55$
- $55 \leq L < 60$
- $60 \leq L < 65$
- $65 \leq L < 70$
- $70 \leq L < 75$
- $75 \leq L < 80$
- $L \geq 80$



C01	08/12/23	DCO APPLICATION	BH	SD	HF
REV.	DATE	AMENDMENT DETAILS	ORIG	CHK'D	APP'D

CLIENT

PURPOSE OF ISSUE
 DCO APPLICATION

DEVELOPMENT CONSENT ORDER NUMBER
 TR010065

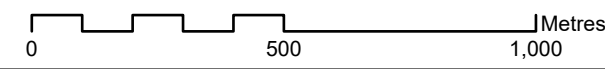
PROJECT TITLE
 A46 NEWARK BYPASS

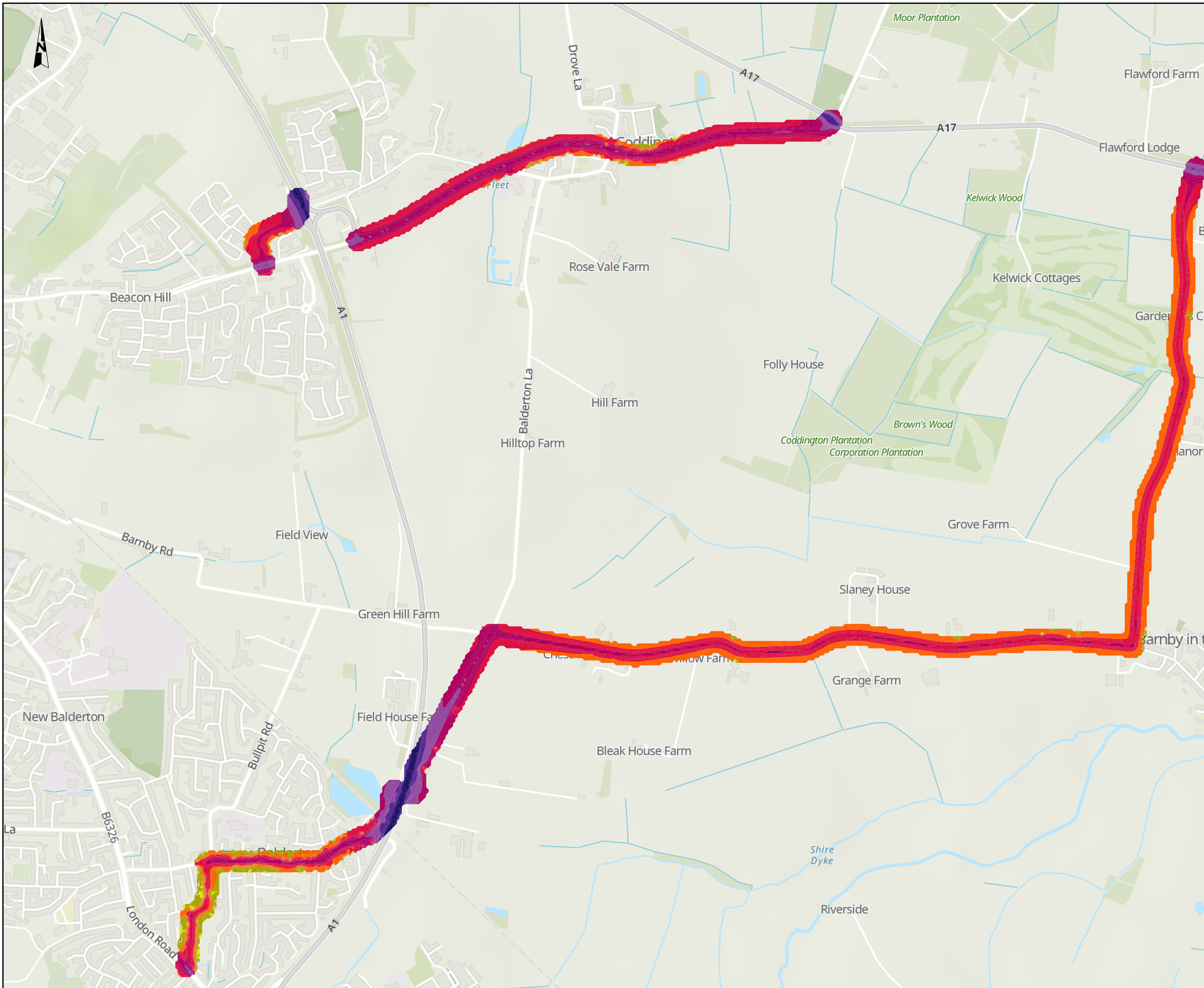
DRAWING TITLE
 Figure 11.5
 Noise levels in the Do Minimum Opening Year
 Sheet: 7 of 8

ORIGINAL SIZE A3 SCALE 1:15,000

DRAWING NUMBER HE551478	ORIGINATOR SKAG	VOLUME ENV	PROJECT REF NO. HE551478
LOCATION CONWI_CONW	TYPE DR	ROLE LA	REVISION C01
	NUMBER 00018		

© Skanska
 This document is issued for the party which commissioned it and for specific purposes connected with the captioned project only. It should not be relied upon by any other party or used for any other purpose.
 We accept no responsibility for the consequences of this document being relied upon by any other party, or being used for any other purpose, or containing any error or omission which is due to an error or omission in data supplied to us by other parties.



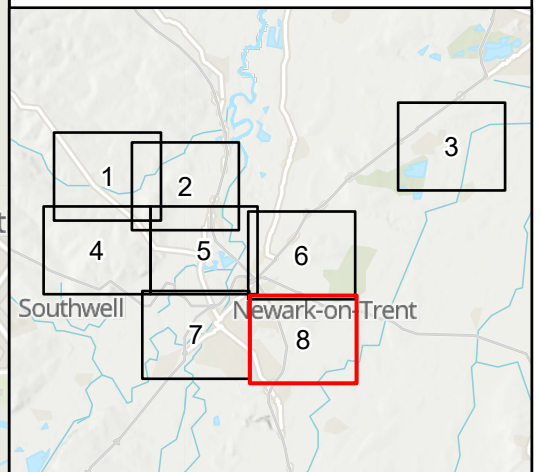


NOTES
 Source
 Noise data designed by Mott MacDonald, 2023.
 Service Layer Credits
 Contains OS data © Crown Copyright and database right 2020
 Contains data from OS Zoomstack, Contains OS data © Crown Copyright and database right 2023
 Contains data from OS Zoomstack

KEY TO SYMBOLS

Noise levels $L=L_{A10,18h}$ (dB) - Do Minimum Opening Year

- $L < 35$
- $35 \leq L < 40$
- $40 \leq L < 45$
- $45 \leq L < 50$
- $50 \leq L < 55$
- $55 \leq L < 60$
- $60 \leq L < 65$
- $65 \leq L < 70$
- $70 \leq L < 75$
- $75 \leq L < 80$
- $L \geq 80$



C01	08/12/23	DCO APPLICATION	BH	SD	HF
REV.	DATE	AMENDMENT DETAILS	ORIG	CHK'D	APP'D

CLIENT

PURPOSE OF ISSUE
 DCO APPLICATION

DEVELOPMENT CONSENT ORDER NUMBER
 TR010065

PROJECT TITLE
 A46 NEWARK BYPASS

DRAWING TITLE
 Figure 11.5
 Noise levels in the Do Minimum Opening Year
 Sheet: 8 of 8

ORIGINAL SIZE A3 SCALE 1:15,000

DRAWING NUMBER HE551478	ORIGINATOR SKAG	VOLUME ENV	PROJECT REF NO. HE551478
LOCATION CONWI_CONW	TYPE DR	ROLE LA	REVISION C01
	NUMBER 00019		

© Skanska
 This document is issued for the party which commissioned it and for specific purposes connected with the captioned project only. It should not be relied upon by any other party or used for any other purpose.
 We accept no responsibility for the consequences of this document being relied upon by any other party, or being used for any other purpose, or containing any error or omission which is due to an error or omission in data supplied to us by other parties.

